

# PVTC Technical Requirements

---

## About the Installation Scenarios

---

The Pearson VUE test center software may require the installation of the VTS software application, ESM application, or both applications. The testing system may be installed in one of two scenarios. Whichever scenario is installed, the hardware and software must meet Pearson VUE's minimum requirements as shown in [System Requirements](#) on page 4.

If you intend to have more than nine test delivery workstations, you must use the Server scenario. If you install the ESM application you must use a Server Scenario. You must use a **Windows 2003 Server** if you need more than nine test delivery workstations. Windows XP allows no more than 9 connections.

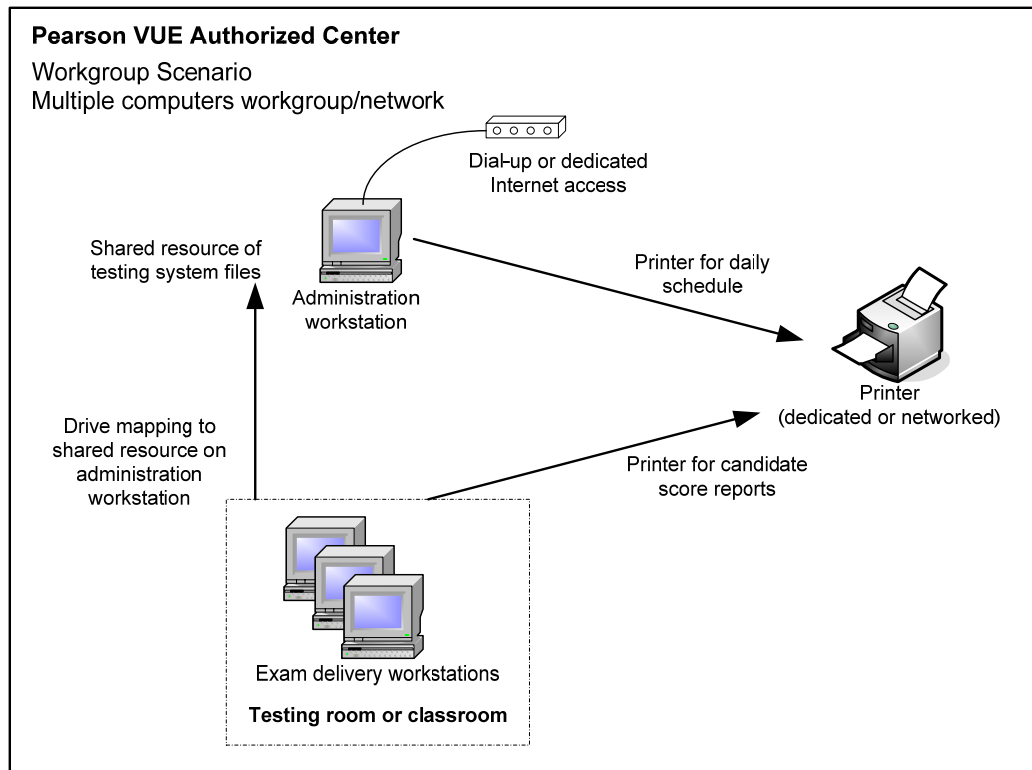


Pearson VUE does not support the following items:

- On the main track: Windows Vista and 64 bit versions of Windows
- Virtual machines in any form
- Standard dialup connections

## Workgroup Scenario Installation – Limited to 9 Workstations

In a Workgroup scenario installation, up to nine testing system workstations are connected through a local area network (LAN) or workgroup, and the administration workstation provides shared file storage. This is illustrated below.

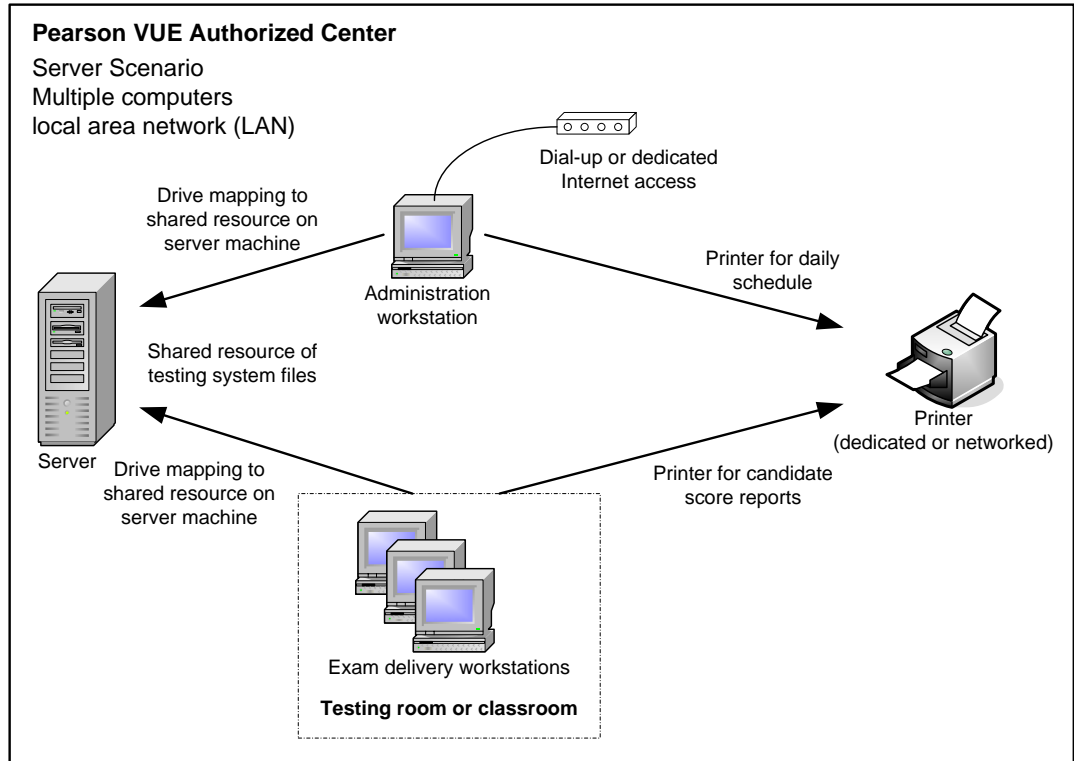


## Server Scenario Installation

In a Server scenario installation, all testing system workstations are connected through a LAN, and a file server provides shared file storage. This is illustrated below. (Server scenario refers to a setup type and is not related to an Operating System.)



You must use a **Windows 2003 Server** if you need more than nine test delivery workstations. Windows XP allows no more than 9 connections.



# System Requirements

Effective **December 1<sup>st</sup>, 2009**, the following pages list the minimum system requirements for installing and running the Pearson VUE Testing System, and for operating as a test center. The minimum requirements will change periodically based on the needs of our exam sponsors. Pearson VUE will notify your test center of any changes.

## Administrator and Exam Delivery Workstations

Requirement	Administrator Workstation	Delivery Workstation
<b>Processor</b>	Pentium 3, 1 GHz	Pentium 4, 2 GHz
<b>RAM</b>	512 MB	512 MB
<b>Hard Drive</b>	4 GB available space	10 GB available space
<b>Video Adapter</b>	Medium color quality (16 bit) 1024 x 768 pixels 8 MB Video RAM	Highest color quality (32 bit) 1024 x 768 pixels 32 MB Video RAM
<b>Display</b>	15 inch (CRT or flat panel)	17 inch (CRT or flat panel)
<b>Mouse and Keyboard</b>	Required	Required
<b>DVD-ROM Drive</b>	Required	Not required
<b>Audio Card</b>	SoundBlaster compatible	SoundBlaster compatible
<b>USB</b>	2 ports required for mouse, & keyboard *2 ports for signature pad, and web camera if biometrics are collected	2 ports required for mouse and keyboard
<b>Printer</b>	Laser 600 dpi with Postscript support, accessible from administrator and delivery workstations	
<b>Network Connection</b>	100 Mbps, wireless networking not supported, <i>Novell not supported</i>	
<b>Internet Connection</b>	Broadband (DSL, cable or LAN/WAN) strongly recommended – total bandwidth must support 25 kbps Down/10 kbps Up for each delivery workstation	
<b>Operating System</b>	Windows XP Professional (32 bit) with Service Pack 2 or later only, NTFS file system <i>Windows 2000 is no longer supported</i> Supported language: English (other languages supported on a limited basis)	Windows XP Professional (32 bit) with Service Pack 2 or later, NTFS file system ( <i>preferred</i> ) Windows 2000 Professional Supported languages: ENG, RUS, DEU, JPN, KOR, CHS and CHT
	<i>Windows Vista and 64 bit versions of Windows not currently supported</i>	
<b>Additional Software Components</b>	<ul style="list-style-type: none"> <li>Microsoft .NET Framework Version 1.1 and 2.0 with Service Pack 1 (x86)</li> <li>Microsoft DirectX 9.0c</li> </ul>	
<b>Internet Browser</b>	Internet Explorer 6.0 SP 2	
<b>Anti-Virus Software</b>	Installed, enabled and regularly updated	

## Shared File Storage

The shared file storage must be accessible to the administrator workstation and all exam delivery work-stations.

- ❖ In a Workgroup Scenario configuration, the shared file storage is located on the local hard drive of the administrator workstation.
- ❖ In a Server Scenario configuration, the shared file storage is on a separate file server.

Whichever scenario is installed, the following requirements apply to the shared file storage:

Requirement	Shared File Storage
<b>Operating System</b>	<i>Server Scenario:</i> Window XP, Windows 2003 Server or Windows 2000 Server 32 bit only, NTFS file system, with latest supported Service Pack
	<i>Workgroup Scenario:</i> See above under administrator workstation requirements
<b>Hard Drive</b>	4 GB available space
<b>Power Supply</b>	UPS recommended
<b>System Backup</b>	Performed daily
<b>Anti-Virus Software</b>	Installed, enabled and regularly updated

## Software licenses

Test centers are required to have appropriate software licenses for all operating systems and application software installed on the computer equipment used for exam administration and delivery.

## Pearson VUE Specific Hardware

Some exams may require the use of biometric capture equipment. Please consult with your Pearson VUE representative to determine if these components are required for your test center. If required these components must be purchased from Pearson VUE.

Requirement	Administrator Workstation
<b>Web Camera</b>	Logitech QuickCam Pro 9000 Webcam
<b>Signature Device</b>	Interlink Electronics ePad Signature Pad Model VP9801 or VP9805