

Government Center PVTC Technical Requirements

About the Installation Scenarios

The Pearson VUE Testing System (VTS) may be installed in one of two configurations: Workgroup scenario or Server scenario. Whichever scenario is installed, the hardware and software must meet Pearson VUE's minimum requirements as shown in [System Requirements](#) on page 4.



If you are installing on **Windows XP** and you need more than nine exam delivery workstations, you must use **Windows Server 2003** or **Windows Server 2008**. If you are installing on **Windows 7**, up to fifteen exam delivery workstations may be configured, otherwise you must use **Windows Server 2008** or **Windows Server 2003**.

Pearson VUE does not support the following items:

- Virtual machines in any form are prohibited
- Standard dialup connections

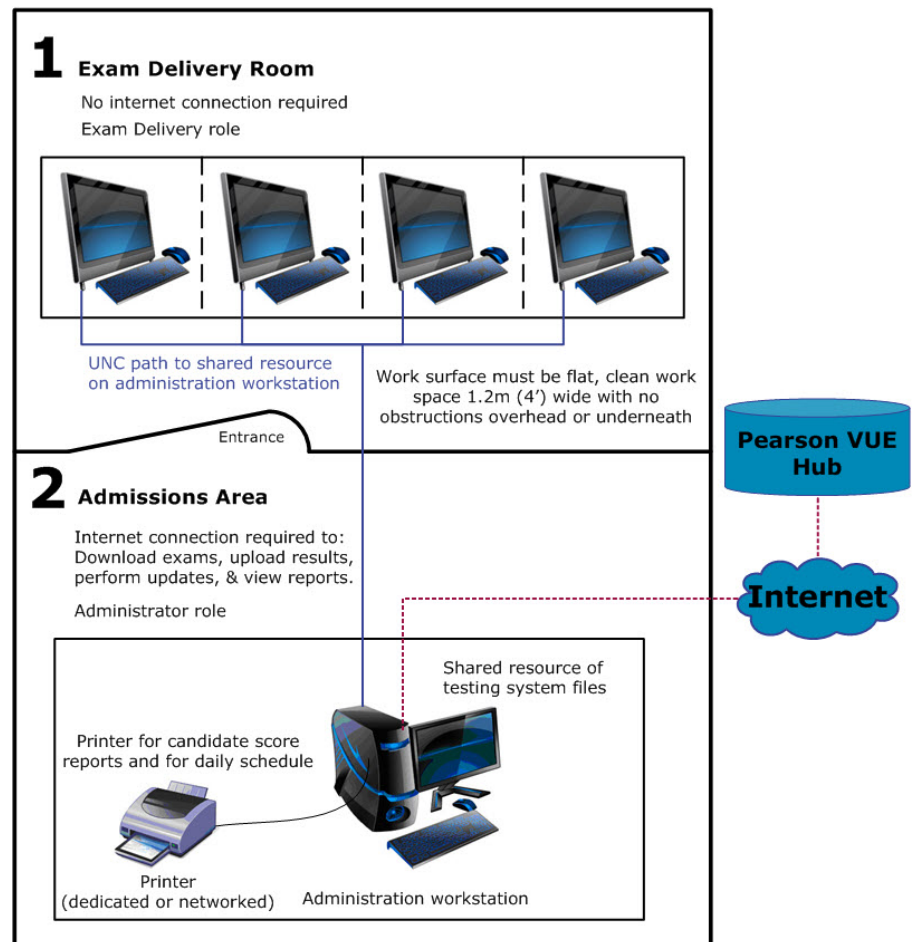
Workgroup scenario installation – limited to 9 Windows XP or 15 Windows 7 Delivery workstations

In a Workgroup scenario installation, up to nine Windows XP or up to fifteen Windows 7 exam Delivery workstations are connected through a local area network (LAN) or workgroup, and the Administration workstation provides shared file storage. This is illustrated below.

Pearson VUE Authorized Center

Workgroup Scenario

Multiple computers workgroup/network



The Windows XP Administration workstation can handle a max of 10 network connections, so if a Proctor workstation is configured, then only 8 exam Delivery workstations may be configured.

Server Scenario Installation

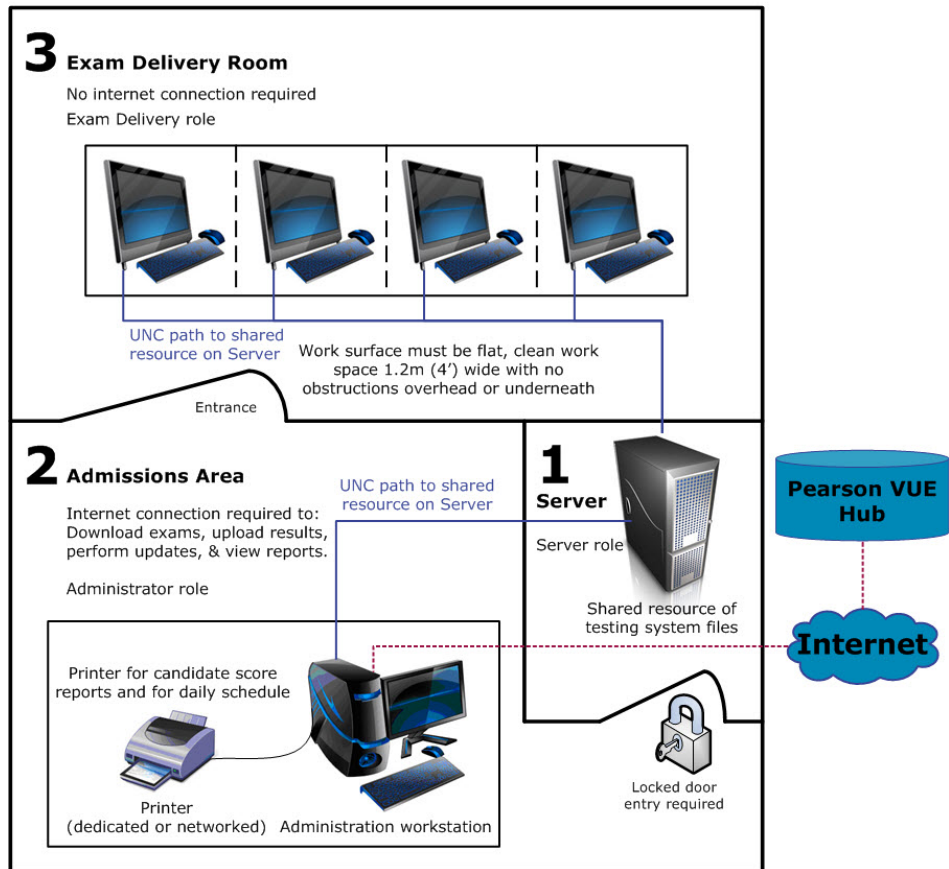
In a Server scenario installation, all exam Delivery workstations are connected through a LAN, and a file server provides shared file storage. This is illustrated below. (Server scenario refers to a setup type and is not related to an Operating System.)



You must use a **Server scenario** if you need more than **fifteen Windows 7** exam delivery workstations or if you need more than **nine Windows XP** exam delivery workstations. Windows XP allows no more than nine connections. Windows 7 performance drops significantly if you use more than fifteen connections.

Pearson VUE Authorized Center

Server Scenario
Multiple computers
local area network (LAN)



System Requirements

Effective **April 1, 2012**, the following pages list the minimum system requirements for installing and running the Pearson VUE Testing System, and for operating as a test center. ***As these are minimum requirements to operate our systems, Pearson recommends purchasing equipment with more than the listed minimum system requirements.*** The minimum requirements will change periodically based on the needs of our exam sponsors. Pearson VUE will notify your test center of any changes.

Administration and exam Delivery workstations

Requirement	Administration Workstation	Delivery Workstation
Processor	Windows compatible Intel or AMD dual or multi-core processor. <i>The Intel Atom line and AMD Neo line of processors are not permitted.</i>	
RAM	2 GB	
Hard Drive	NTFS Format with at least 40 GB available space	NTFS Format with at least 60 GB available space
Operating System	Windows 7 Professional or Enterprise (32 bit and 64 bit) with NTFS file system required or Windows XP Professional (32 bit) with Service Pack 3, NTFS file system required <i>Virtual machine and thin client environments (e.g., VMware, Virtual PC, VirtualBox, Parallels, HP, Wyse, etc.) strictly prohibited.</i>	
Video Adapter	True color (32 bit) 1024 x 768 pixels 128 MB Video RAM Video Adapter must support DirectX 9c or higher	
Display	17 inch or larger (CRT or flat panel)	
Mouse and Keyboard	Mouse, English QWERTY Keyboard	
DVD-ROM Drive	Required	
Audio Card	Windows audio compatible	
USB	Minimum of 2 ports required for mouse and keyboard. Some sites may also need ports for admissions camera, and signature pad	2 ports required for mouse and keyboard.
Network Connection	Network Interface Card (1) Ethernet card 100 mbps between workstation and switch – with internet access. Cabling Ethernet/CAT 5E or better /RJ45 <i>Wireless network connections not permitted</i>	
Internet Connection	Broadband (DSL, cable or LAN/WAN) required. Minimum 512kbps upload. Total bandwidth must support 25 kbps Down/10 kbps Up for each Delivery workstation.	
Internet Browser	Internet Explorer 7.0 or 8.0	
Printer	Laser 600 dpi with Postscript support, accessible from Administration and Delivery workstations	

Government Center PVTC Technical Requirements

Requirement	Administration Workstation	Delivery Workstation
Additional Software Components	<ul style="list-style-type: none"> • Microsoft .NET Framework version 2.0 with Service Pack 1 (x86) • Language Packs installed to support complex languages 	
Anti-Virus Software	Installed, enabled and regularly updated	

Server file storage

The server file storage must be accessible to the Administration workstation and all exam Delivery workstations.

- ❖ In a Workgroup Scenario configuration, the server file storage is located on the local hard drive of the Administration workstation.
- ❖ In a Server Scenario configuration, the server file storage is located on a separate file server.

Whichever scenario is installed, the following requirements apply to the server file storage:

Requirement	Server File Storage
Processor	Windows compatible dual or multi-core processor <i>The Intel Atom line and AMD Neo line of processors are not permitted.</i>
RAM	2 GB
Hard Drive	60 GB available space
Operating System	
<i>Server Scenario:</i>	<p>Windows Server 2008 R2 (more than 15 Windows 7, or 9 Windows XP workstations), 32 bit and 64 bit, NTFS file system, with latest supported Service Pack</p> <p>Windows 2003 Server (more than 15 Windows 7, or 9 Windows XP workstations), 32 bit only, NTFS file system, with latest supported Service Pack Windows</p> <p>Windows 7 Professional or Enterprise (1 - 15 workstations), 32 bit and 64 bit, NTFS file system required</p> <p><i>Virtual machine and thin client environments (e.g., VMware, Virtual PC, VirtualBox, Parallels, HP, Wyse, etc.) strictly prohibited.</i></p>
<i>Workgroup Scenario:</i>	See above under Administration workstation requirements
Additional Software Components	Microsoft .NET Framework Version 2.0 with Service Pack 1 (x86)
DVD-ROM Drive	Required
Network Connections	Network Interface Card Ethernet card 1 GB full 100 mbps from server to switch, wireless networking not permitted, cabling Ethernet /CAT 5E or better /RJ45 <i>Novell NetWare not supported</i>
Power Supply	UPS recommended
System Backup	Performed daily
Anti-Virus Software	Installed, enabled and regularly updated

Pearson VUE specific hardware

Some exams may require the use of test center admissions equipment. Please consult with your Pearson VUE representative to determine if these components are required for your test center. If required, these components must be purchased from Pearson VUE.

Requirement	Administration Workstation
Web Camera	Logitech QuickCam Pro 9000 Webcam
Signature Device	Interlink Electronics ePad Signature Pad Model VP9801 or VP9805

Software licenses

Test centers are required to have appropriate software licenses for all operating systems and application software installed on the workstation equipment used for exam administration and delivery.